

6 April 2007

## Replacing the CS71x module

### Summary

The Cleverscope CS710/2/4 modules can be replaced in the field with the correct tools. This document describes how this is done.

### Equipment and environment

A static free environment is required to assure reliability. Please place the acquisition unit on an earthed anti-static mat, and wear an earthed anti-static wrist strap while carrying out module replacement.

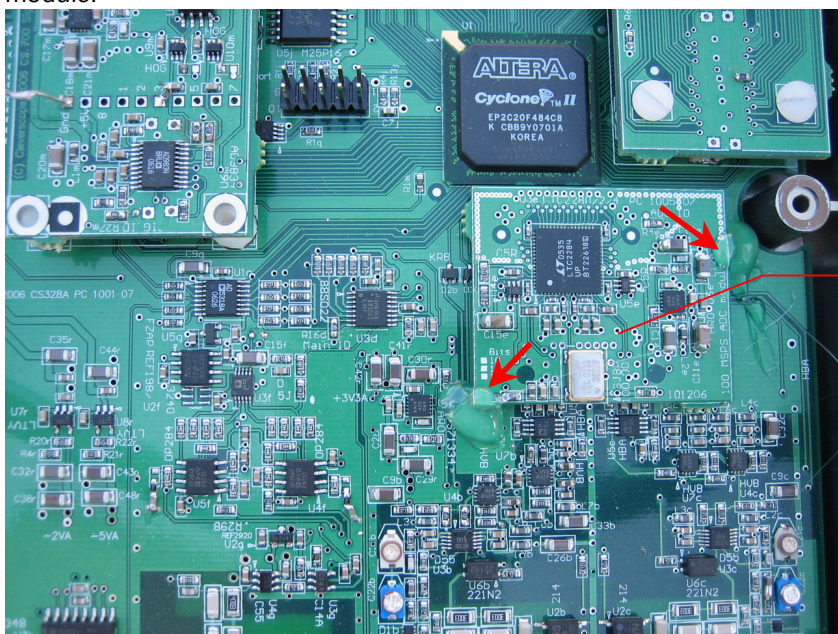
You will need the following equipment:

1. Two flat bladed screw drivers, with 4-5 mm (1/4- 5/32") blades.
2. A hot melt glue gun.
3. A small pozi drive screwdriver.
4. Serrated long nose pliers.
5. Earthed anti-static mat.
6. Earthed anti-static wrist strap.

### Module replacement

Carry out the following steps:

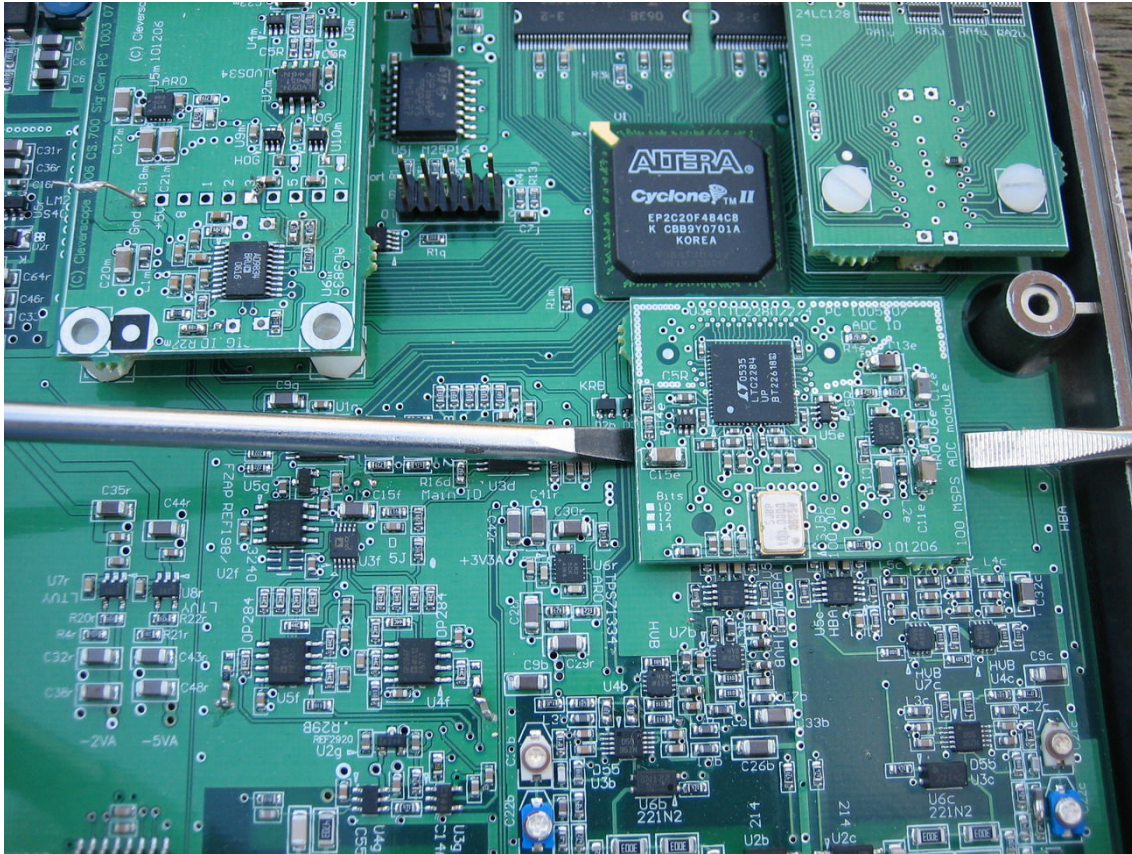
1. Place the acquisition unit on the anti-start mat, upside down, and remove the two pozi drive screws.
2. Turn the unit over, and carefully remove the top cover. Do this pulling up gently on one side at a time.
3. Identify the CS71x module, and using the long nose pliers carefully remove the holt melt glue on the CS71x module.



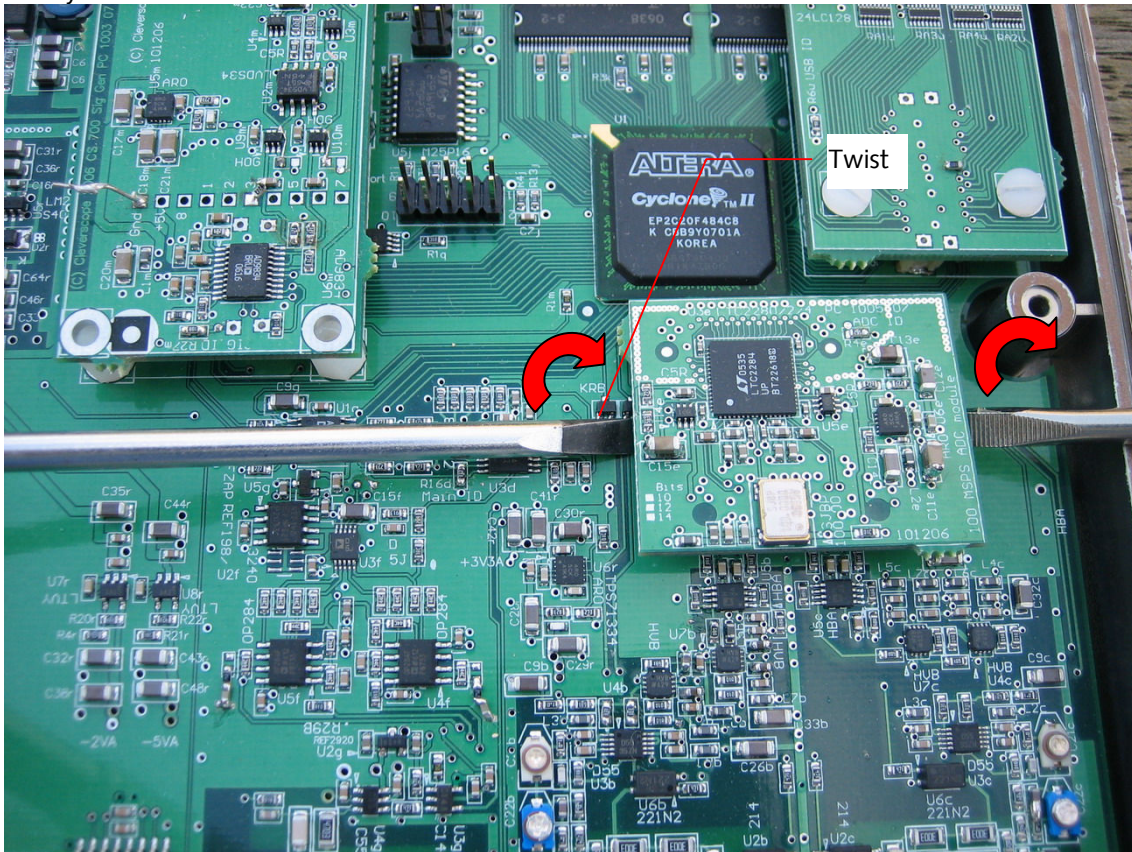
CS71x  
module,  
Remove  
hotmelt.



4. Place the two screwdrivers as shown, blades flat to the module PCB board.

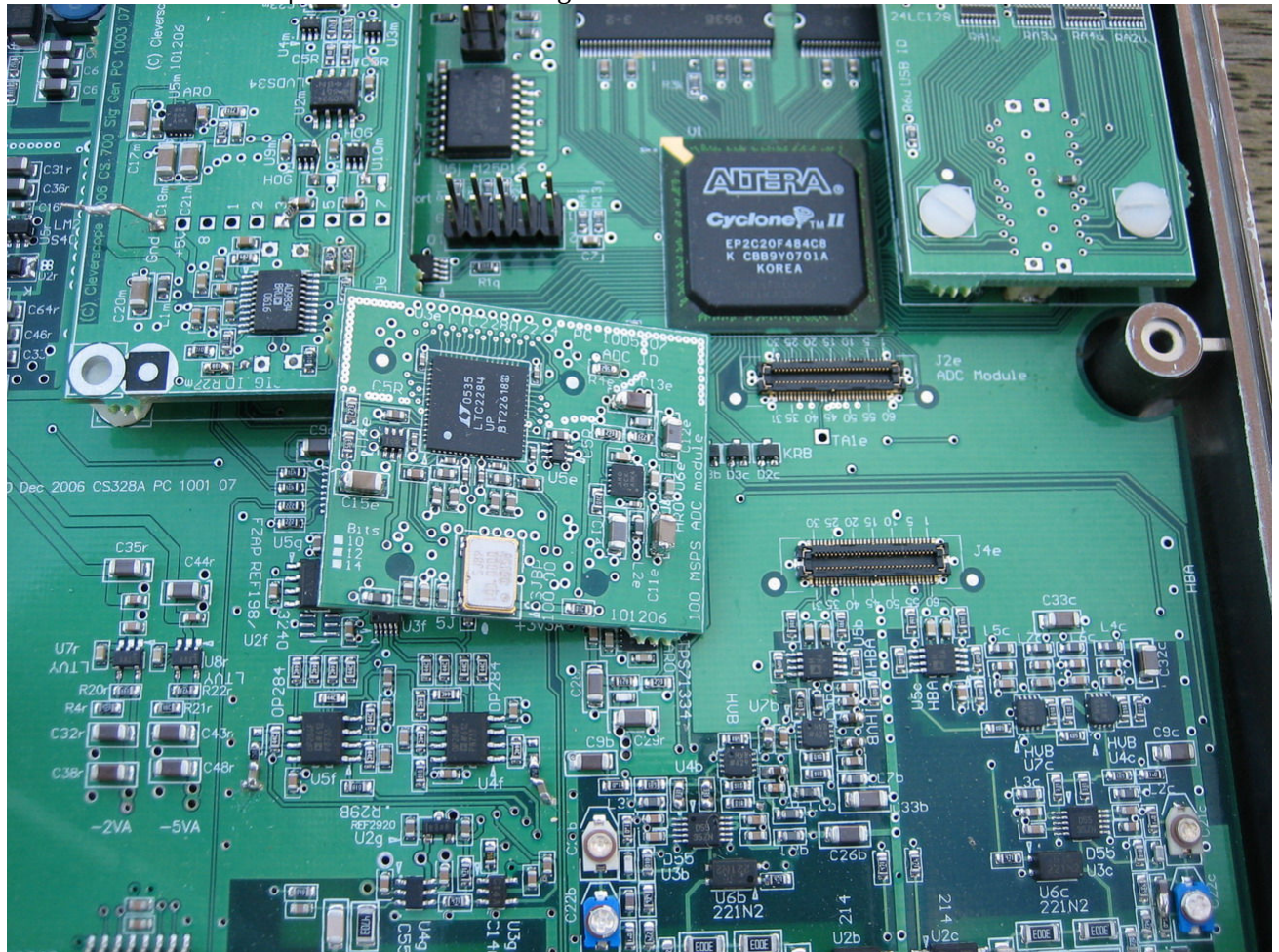


5. Gently twist the screwdrivers as shown to release the board.



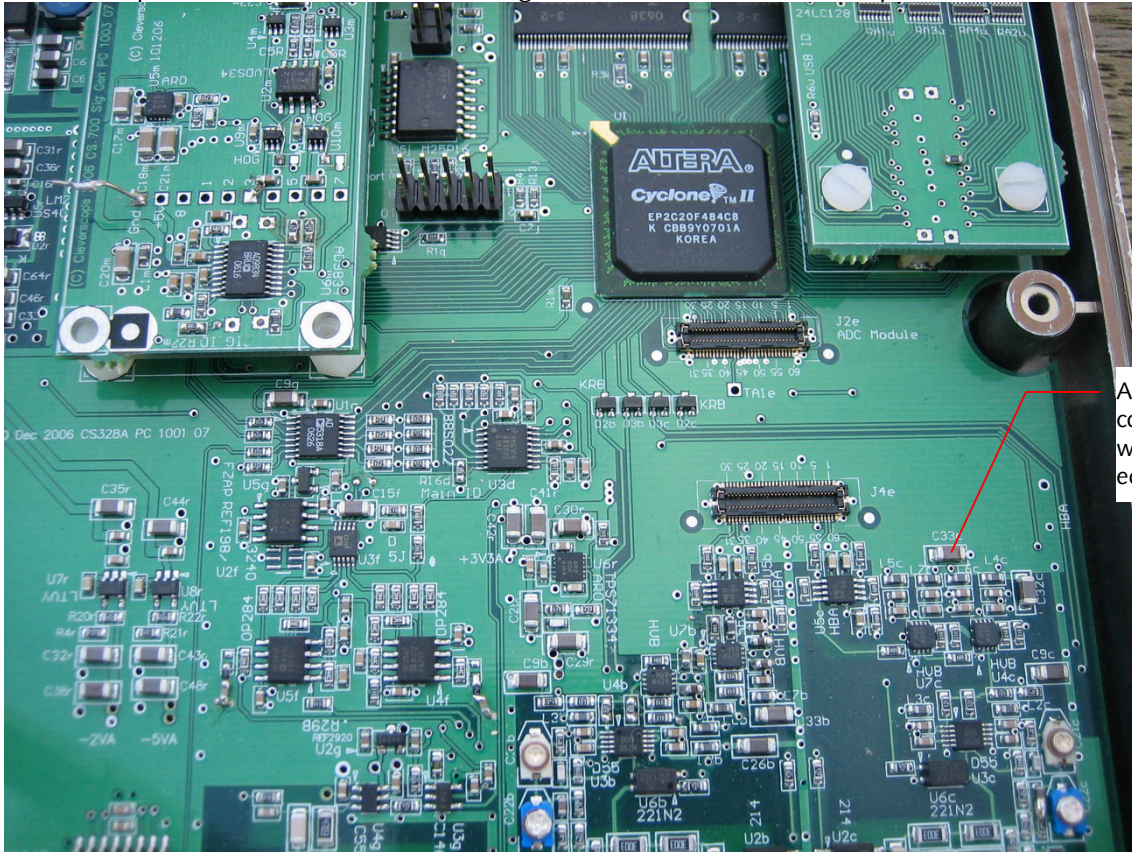


6. Remove the module and place in an anti-static bag.



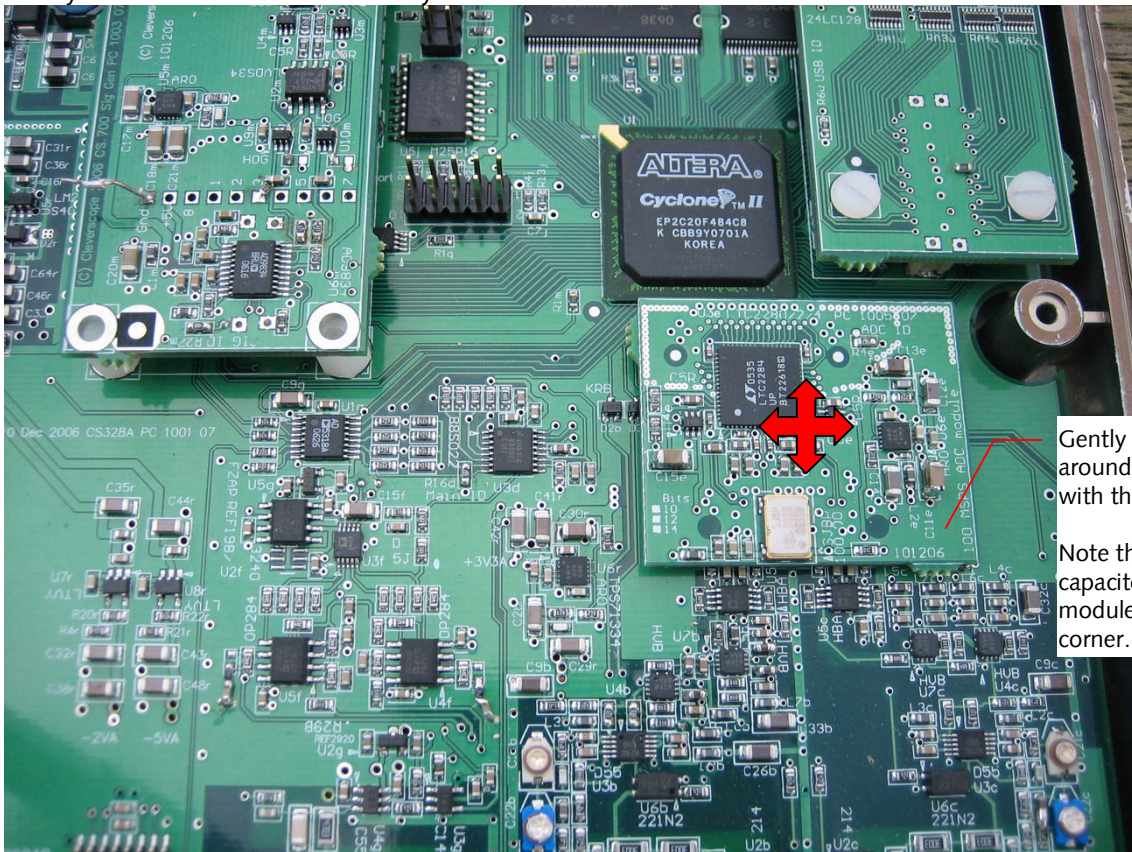


7. Place the replacement module so the lower right corner is above the 1206 capacitor as shown.



Align bottom right corner of module with bottom right edge of capacitor

8. Gently move the board around until you can feel the board mate with the two connectors.

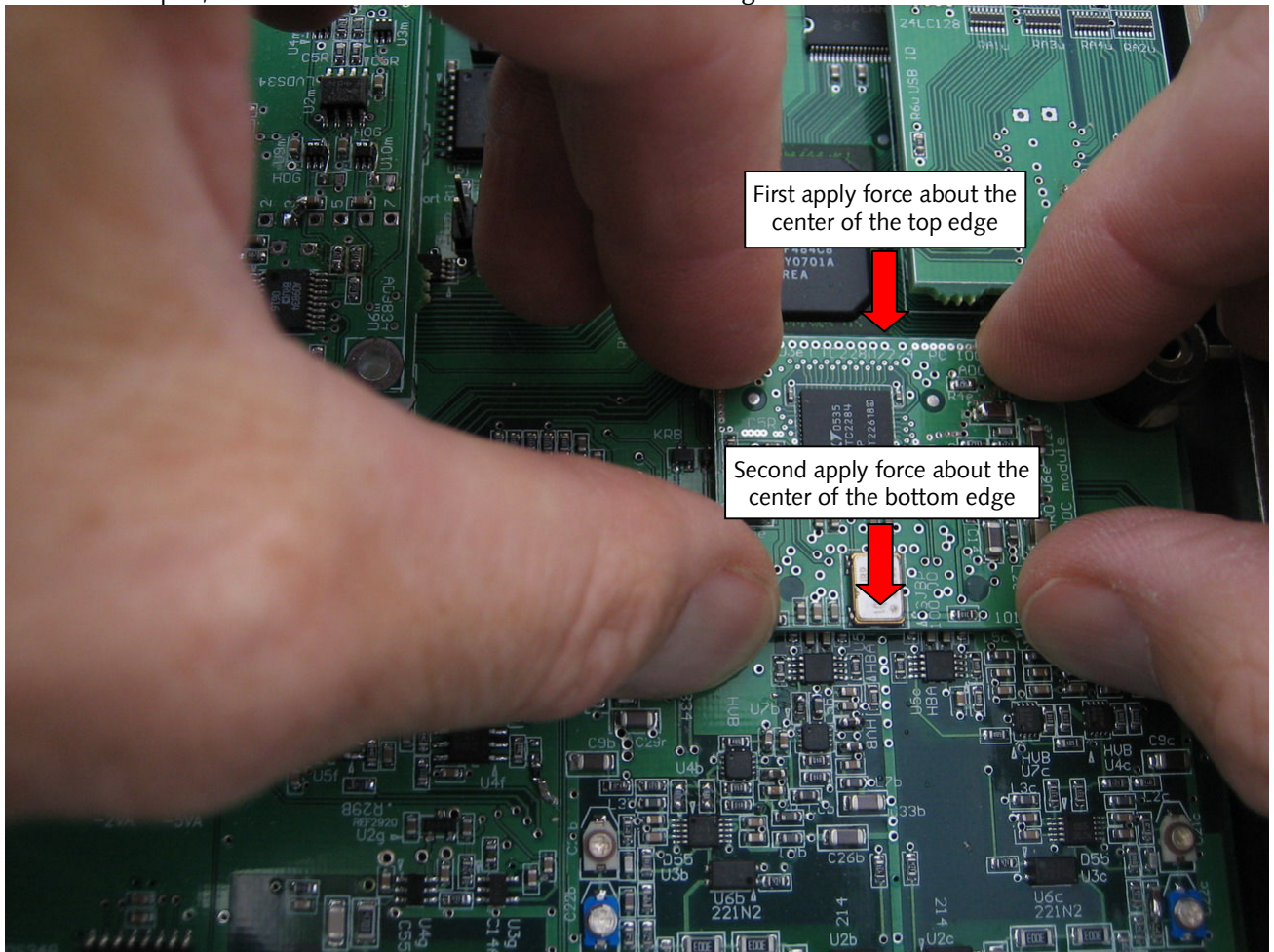


Gently move the module around a little until it mates with the connectors.

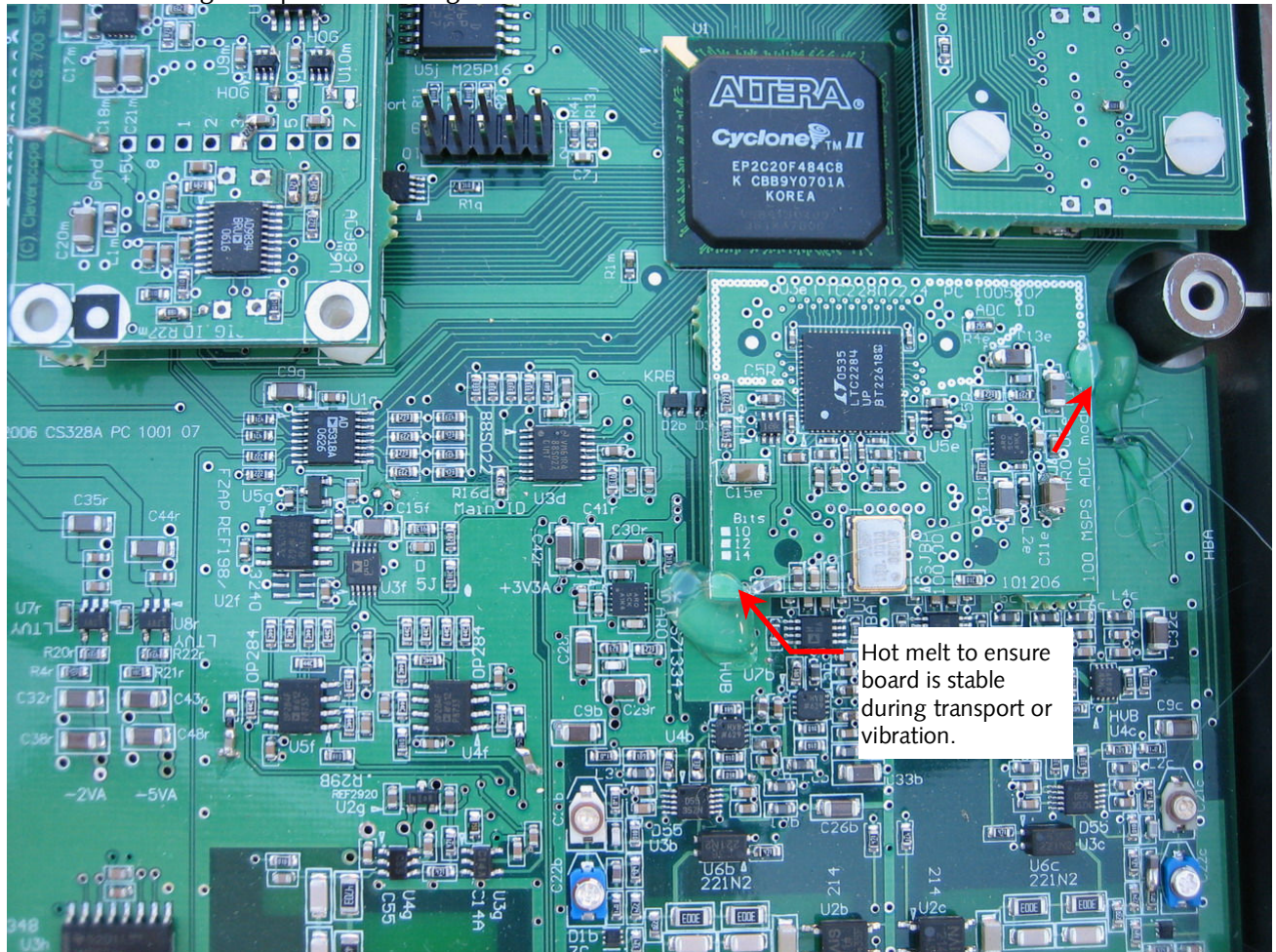
Note the reference capacitor under the module's bottom right corner.



9. With fingers on both side as shown, first push down with upper left and right fore fingers until you feel the connector snap in, and then do the same with the lower left and right thumbs.



10. Use the hot melt gun to place hot melt glue as shown.



11. Place the lid back onto the unit, taking care to keep the serrations to the front. Locate the front and rear panels so they slide into the lid front and rear grooves.

12. Replace the Pozi drive screws, and tighten.